

Courtesy Of Jeff D Jackson Of Bode

# \$549,900 - 13 Ashbury Crescent, Spruce Grove

MLS® #E4413519

**\$549,900**

3 Bedroom, 2.50 Bathroom, 1,886 sqft

Single Family on 0.00 Acres

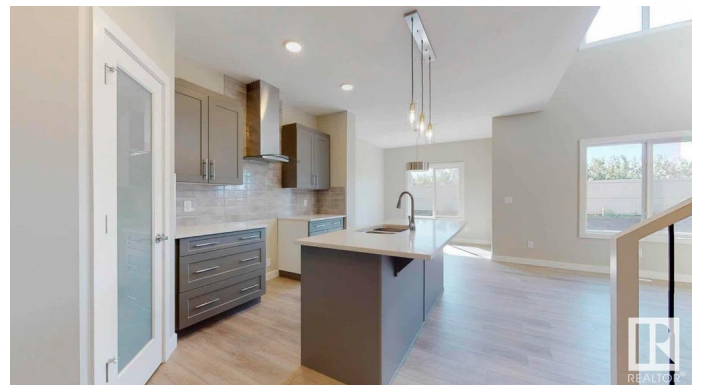
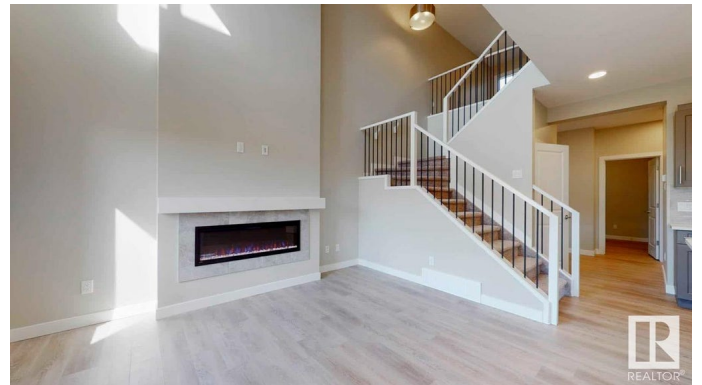
Jesperdale, Spruce Grove, AB

The Paxton is a beautifully designed home blending modern style with family-friendly features. Step into a spacious foyer that leads to a cozy main-floor den, perfect for a home office or study. The open-concept layout features a side entrance, a large great room with a warm fireplace, and a gourmet kitchen with full quartz countertops, a large island with a flush eating bar. Upstairs, the front-facing primary bedroom is a peaceful retreat with a walk-in closet and a luxurious ensuite with dual sinks, a drop-in tub, and a separate shower. Two additional bedrooms, a versatile bonus room, and convenient upstairs laundry with a linen closet add practicality and space for a growing family. The Paxton is thoughtfully designed for comfort, convenience, and style—perfect for creating lasting family memories. Photos are representative. This under construction San Rufo home, will be ready for possession spring 2025

Built in 2024

## Essential Information

MLS® #	E4413519
Price	\$549,900
Bedrooms	3
Bathrooms	2.50
Full Baths	2



Half Baths	1
Square Footage	1,886
Acres	0.00
Year Built	2024
Type	Single Family
Sub-Type	Detached Single Family
Style	2 Storey
Status	Active

### **Community Information**

Address	13 Ashbury Crescent
Area	Spruce Grove
Subdivision	Jesperdale
City	Spruce Grove
County	ALBERTA
Province	AB
Postal Code	T7X 0E6

### **Amenities**

Amenities	No Animal Home, No Smoking Home
Parking Spaces	4
Parking	Double Garage Attached

### **Interior**

Interior Features	ensuite bathroom
Appliances	None
Heating	Forced Air-1, Natural Gas
Fireplace	Yes
Fireplaces	Insert
Stories	2
Has Basement	Yes
Basement	Full, Unfinished

### **Exterior**

Exterior	Wood, Stone, Vinyl
Exterior Features	Park/Reserve, Playground Nearby, Shopping Nearby
Roof	Asphalt Shingles
Construction	Wood, Stone, Vinyl
Foundation	Concrete Perimeter

## Additional Information

Date Listed November 13th, 2024

Days on Market 159

Zoning Zone 91

DATA IS DEEMED RELIABLE BUT IS NOT GUARANTEED ACCURATE BY THE REALTORS® ASSOCIATION OF EDMONTON. COPYRIGHT 2025 BY THE REALTORS® ASSOCIATION OF EDMONTON. ALL RIGHTS RESERVED. Trademarks are owned or controlled by the Canadian Real Estate Association (CREA) and identify real estate professionals who are members of CREA (REALTOR®, REALTORS®) and/or the quality of services they provide (MLS®, Multiple Listing Service®)

Listing information last updated on April 21st, 2025 at 1:17am MDT