

\$689,997 - 1655 27 Street, Edmonton

MLS® #E4415042

\$689,997

3 Bedroom, 3.00 Bathroom, 2,096 sqft

Single Family on 0.00 Acres

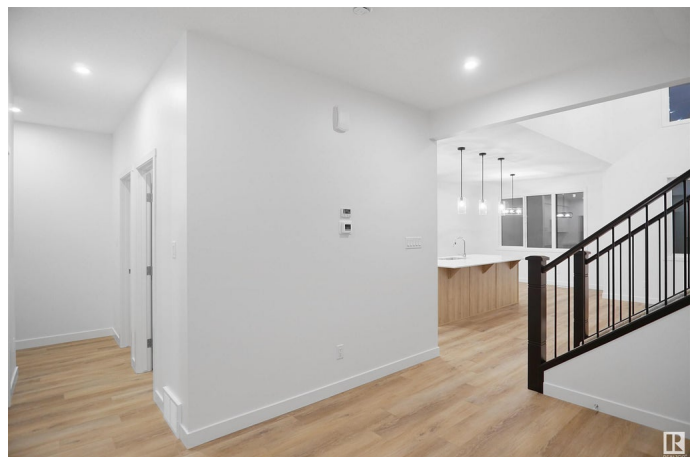
Laurel, Edmonton, AB

Welcome to the all new "Newcastle" built by the award-winning builder Pacesetter homes located in the heart of Laurel and just steps to the walking trails and and natural reserves. As you enter the home you are greeted by luxury vinyl plank flooring throughout the great room (with open to above ceilings) , kitchen, and the breakfast nook. Your large kitchen features tile back splash, an island a flush eating bar, quartz counter tops and an undermount sink. Just off of the kitchen and tucked away by the front entry is a 2 piece powder room. Upstairs is the primary bedroom retreat with a large walk in closet and a 4-piece en-suite. The second level also include 2 additional bedrooms with a conveniently placed main 4-piece bathroom and a good sized bonus room. This home sits on a regular lot not a zero lot line AND THE BEST PART IS THIS HOME BACKS THE POND!!! *** Photos used are from the exact same model recently built colors may vary , To be complete by Spring of 2025 ***

Built in 2024

Essential Information

MLS® #	E4415042
Price	\$689,997
Bedrooms	3



Bathrooms	3.00
Full Baths	3
Square Footage	2,096
Acres	0.00
Year Built	2024
Type	Single Family
Sub-Type	Detached Single Family
Style	2 Storey
Status	Active

Community Information

Address	1655 27 Street
Area	Edmonton
Subdivision	Laurel
City	Edmonton
County	ALBERTA
Province	AB
Postal Code	T6T 2N5

Amenities

Amenities	See Remarks
Parking	Double Garage Attached
Is Waterfront	Yes

Interior

Interior Features	ensuite bathroom
Appliances	Garage Control, Garage Opener, See Remarks
Heating	Forced Air-1, Natural Gas
Stories	2
Has Basement	Yes
Basement	Full, Unfinished

Exterior

Exterior	Wood, Stone, Vinyl
Exterior Features	Backs Onto Lake, Golf Nearby, Lake Access Property, Park/Reserve, Playground Nearby, Public Swimming Pool, Public Transportation, Schools, Shopping Nearby, View Lake, See Remarks
Roof	Asphalt Shingles
Construction	Wood, Stone, Vinyl

Foundation Concrete Perimeter

Additional Information

Date Listed December 1st, 2024

Days on Market 139

Zoning Zone 30

DATA IS DEEMED RELIABLE BUT IS NOT GUARANTEED ACCURATE BY THE REALTORS® ASSOCIATION OF EDMONTON. COPYRIGHT 2025 BY THE REALTORS® ASSOCIATION OF EDMONTON. ALL RIGHTS RESERVED.Trademarks are owned or controlled by the Canadian Real Estate Association (CREA) and identify real estate professionals who are members of CREA (REALTOR®, REALTORS®) and/or the quality of services they provide (MLS®, Multiple Listing Service®)

Listing information last updated on April 19th, 2025 at 7:47pm MDT