

\$1,150,000 - 10230 125 Street, Edmonton

MLS® #E4425318

\$1,150,000

3 Bedroom, 2.50 Bathroom, 2,047 sqft

Single Family on 0.00 Acres

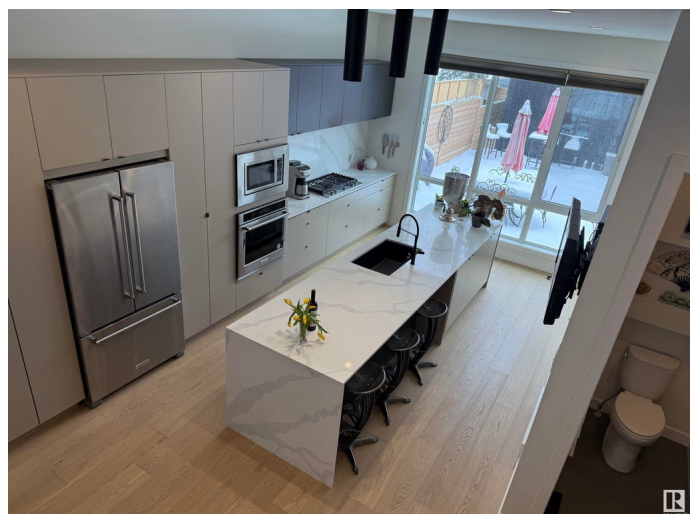
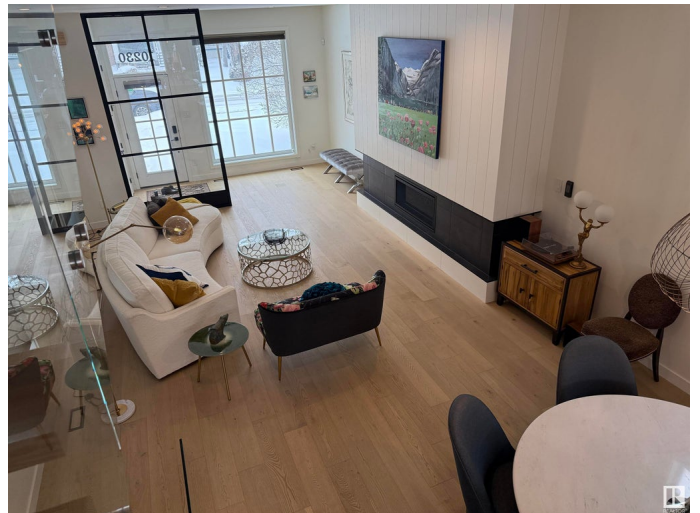
Westmount, Edmonton, AB

LOCATION! LOCATION! LOCATION! Situated on an exclusive and desirable, elite strip of houses on a beautiful tree-lined street sits this **PRIME LOCATION** property. Inside you'll find giant windows allowing a ton of natural light throughout, central A/C, GAS fireplace, shiplap wall detail, gorgeous cabinetry, quartz countertops, stainless steel appliance package, built in sound, low maintenance landscaping, 20ft composite deck, 9ft garage door w/ electric motor, upgraded panel and wiring for charging station. This luxury home in Groat Estates has it all! Frameless glass railings and custom open-rise staircase adds to the visual luxury. Relax in the primary bedroom oasis - floor to ceiling windows, 8ft doors and a 5pc spa like ensuite. This one also has a professionally finished basement family room, cozy enough for movie night but large enough to entertain guests. This one is truly a must see and is sure to make your short list!

Built in 2019

Essential Information

MLS® #	E4425318
Price	\$1,150,000
Bedrooms	3
Bathrooms	2.50
Full Baths	2



Half Baths	1
Square Footage	2,047
Acres	0.00
Year Built	2019
Type	Single Family
Sub-Type	Detached Single Family
Style	2 Storey
Status	Active

Community Information

Address	10230 125 Street
Area	Edmonton
Subdivision	Westmount
City	Edmonton
County	ALBERTA
Province	AB
Postal Code	T5N 1S9

Amenities

Amenities	Off Street Parking, Air Conditioner, No Animal Home, No Smoking Home, Infill Property
Parking Spaces	4
Parking	Double Garage Detached

Interior

Interior Features	ensuite bathroom
Appliances	Air Conditioning-Central, Dishwasher-Built-In, Dryer, Garage Opener, Oven-Built-In, Oven-Microwave, Refrigerator, Stove-Countertop Gas, Washer, Window Coverings, Wine/Beverage Cooler
Heating	Forced Air-1, Natural Gas
Fireplace	Yes
Fireplaces	Direct Vent
Stories	2
Has Basement	Yes
Basement	Full, Partially Finished

Exterior

Exterior	Wood, Brick, Metal
Exterior Features	Back Lane, Fenced, Flat Site, Playground Nearby, Public Transportation,

	Schools, Shopping Nearby
Roof	Asphalt Shingles
Construction	Wood, Brick, Metal
Foundation	Concrete Perimeter

Additional Information

Date Listed	March 12th, 2025
Days on Market	37
Zoning	Zone 07

DATA IS DEEMED RELIABLE BUT IS NOT GUARANTEED ACCURATE BY THE REALTORS® ASSOCIATION OF EDMONTON. COPYRIGHT 2025 BY THE REALTORS® ASSOCIATION OF EDMONTON. ALL RIGHTS RESERVED. Trademarks are owned or controlled by the Canadian Real Estate Association (CREA) and identify real estate professionals who are members of CREA (REALTOR®, REALTORS®) and/or the quality of services they provide (MLS®, Multiple Listing Service®)

Listing information last updated on April 18th, 2025 at 4:32am MDT