

\$318,900 - 38 14603 Miller Boulevard, Edmonton

MLS® #E4427466

\$318,900

3 Bedroom, 1.50 Bathroom, 1,101 sqft

Condo / Townhouse on 0.00 Acres

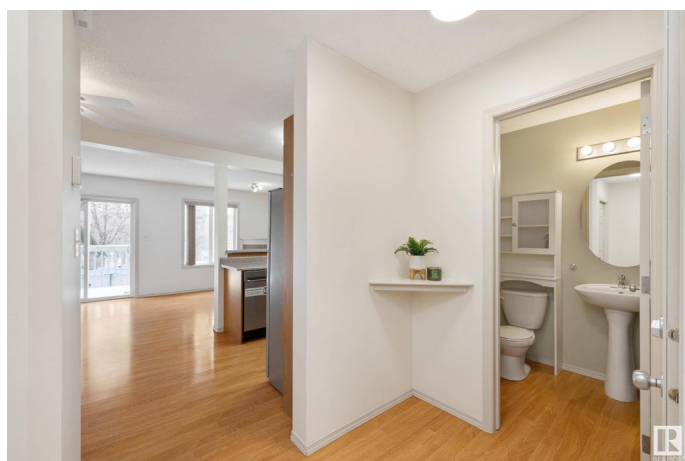
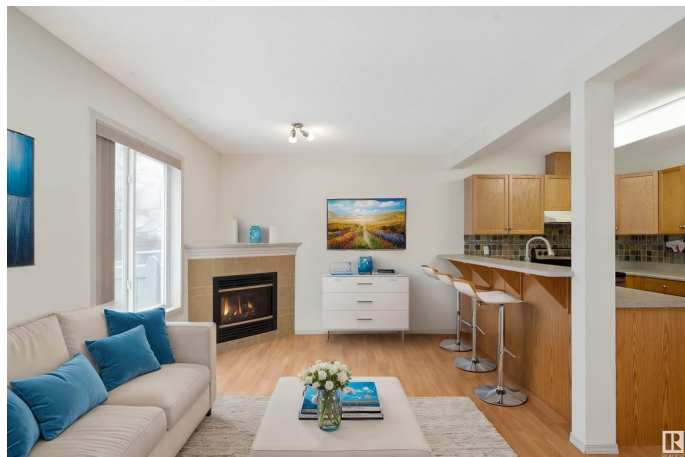
Miller, Edmonton, AB

Welcome to this beautifully updated 1100 sq ft two-storey half duplex, ideally located on a quiet street backing onto a serene greenspace with mature trees. Offering a perfect blend of comfort and convenience, this home features three bedrooms, two and a half bathrooms, and a fully developed basement—ideal for additional living space or entertaining. The great room is warm and inviting with a gas fireplace, perfect for cozy evenings. The front attached garage adds everyday ease, while nearby shopping and quick access to the LRT make daily errands and commuting a breeze.

Built in 2002

Essential Information

| | |
|----------------|-------------------|
| MLS® # | E4427466 |
| Price | \$318,900 |
| Bedrooms | 3 |
| Bathrooms | 1.50 |
| Full Baths | 1 |
| Half Baths | 1 |
| Square Footage | 1,101 |
| Acres | 0.00 |
| Year Built | 2002 |
| Type | Condo / Townhouse |
| Sub-Type | Half Duplex |
| Style | 2 Storey |



| | |
|--------|--------|
| Status | Active |
|--------|--------|

Community Information

| | |
|-------------|---------------------------|
| Address | 38 14603 Miller Boulevard |
| Area | Edmonton |
| Subdivision | Miller |
| City | Edmonton |
| County | ALBERTA |
| Province | AB |
| Postal Code | T5Y 3B6 |

Amenities

| | |
|-----------|---|
| Amenities | Closet Organizers, Deck, Detectors Smoke, Front Porch, Parking-Visitor, Television Connection |
| Parking | Single Garage Attached |

Interior

| | |
|--------------|--|
| Appliances | Dishwasher-Built-In, Dryer, Hood Fan, Refrigerator, Stove-Electric, Washer |
| Heating | Forced Air-1, Natural Gas |
| Stories | 3 |
| Has Basement | Yes |
| Basement | Partial, Finished |

Exterior

| | |
|-------------------|--|
| Exterior | Wood, Vinyl |
| Exterior Features | Airport Nearby, Backs Onto Park/Trees, Fenced, Flat Site, Fruit Trees/Shrubs, Golf Nearby, Landscaped, Playground Nearby, Public Transportation, Ravine View, Schools, Shopping Nearby, Ski Hill Nearby, Treed Lot |
| Roof | Asphalt Shingles |
| Construction | Wood, Vinyl |
| Foundation | Concrete Perimeter |

School Information

| | |
|------------|-----------------------|
| Elementary | McLeod School |
| Middle | Steele Heights School |
| High | M.E. LaZerte School |

Additional Information

| | |
|----------------|------------------|
| Date Listed | March 26th, 2025 |
| Days on Market | 24 |
| Zoning | Zone 02 |
| Condo Fee | \$179 |

DATA IS DEEMED RELIABLE BUT IS NOT GUARANTEED ACCURATE BY THE REALTORS® ASSOCIATION OF EDMONTON. COPYRIGHT 2025 BY THE REALTORS® ASSOCIATION OF EDMONTON. ALL RIGHTS RESERVED. Trademarks are owned or controlled by the Canadian Real Estate Association (CREA) and identify real estate professionals who are members of CREA (REALTOR®, REALTORS®) and/or the quality of services they provide (MLS®, Multiple Listing Service®)

Listing information last updated on April 19th, 2025 at 2:47pm MDT