

Courtesy Of Camron Rahmanian Of MaxWell Polaris

\$269,000 - 805 9939 109 Street, Edmonton

MLS® #E4428146

\$269,000

2 Bedroom, 2.00 Bathroom, 845 sqft
Condo / Townhouse on 0.00 Acres

Downtown (Edmonton), Edmonton, AB

This 2 bedroom, 2 bathroom condo offers an open concept living space. Equipped with air conditioning and an underground parking stall, the unit delivers comfort and convenience year-round. Take advantage of the on-site gym for fitness and leisure. Located in proximity to major post-secondary institutions like the University of Alberta, Grant MacEwan, NAIT, and NorQuest College, it is ideal for those in the academic community or anyone seeking to tap into the vibrant educational atmosphere. Additionally, the proximity to Rogers Place positions it perfectly for entertainment and dining options, enhancing the urban experience. This condo is a superb choice for practical living or investment.

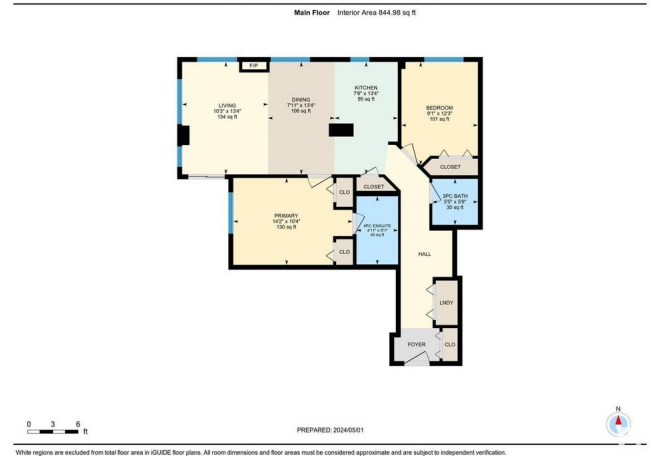
Built in 2005

Essential Information

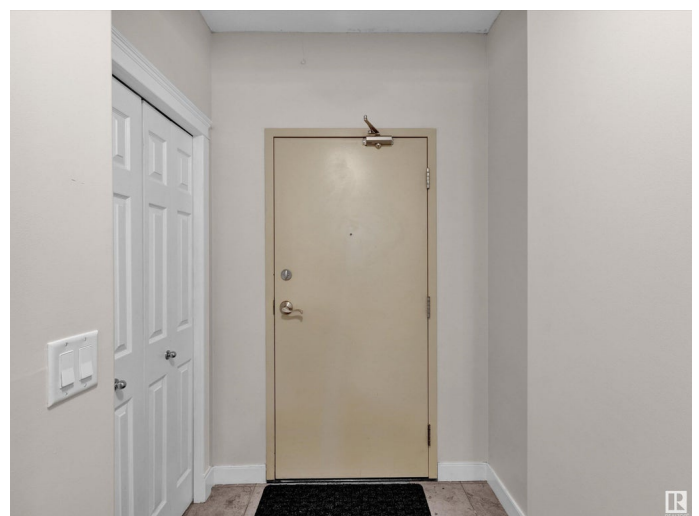
MLS® #	E4428146
Price	\$269,000
Bedrooms	2
Bathrooms	2.00
Full Baths	2
Square Footage	845
Acres	0.00
Year Built	2005
Type	Condo / Townhouse



805-9939 109 St NW, Edmonton, AB



White regions are excluded from total floor area in GUIDE floor plans. All room dimensions and floor areas must be considered approximate and are subject to independent verification.



Sub-Type	Apartment High Rise
Style	Single Level Apartment
Status	Active

Community Information

Address	805 9939 109 Street
Area	Edmonton
Subdivision	Downtown (Edmonton)
City	Edmonton
County	ALBERTA
Province	AB
Postal Code	T5K 1H6

Amenities

Amenities	Air Conditioner, Exercise Room, No Animal Home, No Smoking Home
Parking	Heated, Underground

Interior

Interior Features	ensuite bathroom
Appliances	Air Conditioning-Central, Dishwasher-Built-In, Microwave Hood Fan, Refrigerator, Stove-Electric, Washer, Dryer-Two
Heating	Forced Air-1, Natural Gas
Fireplace	Yes
Fireplaces	Mantel
# of Stories	18
Stories	1
Has Basement	Yes
Basement	None, No Basement

Exterior

Exterior	Concrete, Brick, Stucco
Exterior Features	Airport Nearby, Public Transportation, Shopping Nearby
Roof	EPDM Membrane
Construction	Concrete, Brick, Stucco
Foundation	Concrete Perimeter

Additional Information

Date Listed	March 28th, 2025
Days on Market	13

Zoning	Zone 12
Condo Fee	\$658

DATA IS DEEMED RELIABLE BUT IS NOT GUARANTEED ACCURATE BY THE REALTORS® ASSOCIATION OF EDMONTON. COPYRIGHT 2025 BY THE REALTORS® ASSOCIATION OF EDMONTON. ALL RIGHTS RESERVED. Trademarks are owned or controlled by the Canadian Real Estate Association (CREA) and identify real estate professionals who are members of CREA (REALTOR®, REALTORS®) and/or the quality of services they provide (MLS®, Multiple Listing Service®)

Listing information last updated on April 10th, 2025 at 3:17pm MDT