

Courtesy Of Wendi Darling Of Century 21 Masters

\$435,000 - 5 Hudson Cove, Spruce Grove

MLS® #E4428776

\$435,000

3 Bedroom, 2.50 Bathroom, 1,662 sqft
Single Family on 0.00 Acres

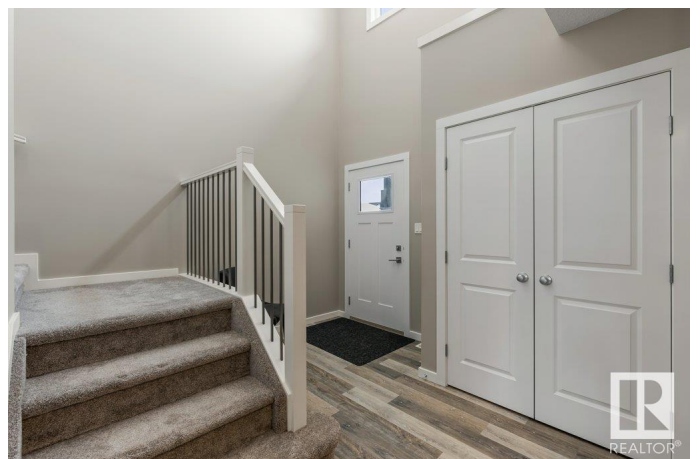
Harvest Ridge, Spruce Grove, AB

Built in 2020, this immaculate half duplex in Harvest Ridge still feels brand new! The bright, modern kitchen features quartz countertops, a corner pantry, an island with an eating bar, sleek two-toned cabinetry, and oversized beveled subway tile. The open-concept main floor has stylish laminate flooring, pot lights, an elegant electric fireplace, and an 18'™ entryway ceiling for a grand first impression. A main-floor den with double doors provides the perfect office or flex space, along with a convenient powder room and laundry. Upstairs, three bedrooms, a primary suite with a W-I closet and en-suite with a stand-up shower. Cozy carpet adds warmth to the upper level. Stay comfortable year-round with A/C and an HRV system. The fully fenced backyard offers a deck and alley access while the front has parking and storage with its attached double garage. Steps from a baseball field, St. Peter's™ High, minutes to the Tri-Leisure Centre, and Yellowhead-move-in-ready home packed with thoughtful upgrades!

Built in 2020

Essential Information

MLS® #	E4428776
Price	\$435,000



Bedrooms	3
Bathrooms	2.50
Full Baths	2
Half Baths	1
Square Footage	1,662
Acres	0.00
Year Built	2020
Type	Single Family
Sub-Type	Half Duplex
Style	2 Storey
Status	Active

Community Information

Address	5 Hudson Cove
Area	Spruce Grove
Subdivision	Harvest Ridge
City	Spruce Grove
County	ALBERTA
Province	AB
Postal Code	T7X 0R8

Amenities

Amenities	Air Conditioner, Deck, Exterior Walls- 2"x6", No Animal Home, No Smoking Home, Vinyl Windows, See Remarks
Parking Spaces	4
Parking	Double Garage Attached
Is Waterfront	Yes

Interior

Interior Features	ensuite bathroom
Appliances	Air Conditioning-Central, Dishwasher-Built-In, Dryer, Garage Control, Garage Opener, Microwave Hood Fan, Refrigerator, Washer, Window Coverings
Heating	Forced Air-1, Natural Gas
Fireplace	Yes
Fireplaces	Remote Control
Stories	2
Has Basement	Yes
Basement	Full, Unfinished

Exterior

Exterior	Wood, Vinyl
Exterior Features	Backs Onto Lake, Fenced, Golf Nearby, Landscaped, Playground Nearby, Public Transportation, Schools, Shopping Nearby, See Remarks
Roof	Asphalt Shingles
Construction	Wood, Vinyl
Foundation	Concrete Perimeter

School Information

Elementary	Copperhaven School
Middle	Copperhaven School
High	Spruce Grove Composite Hig

Additional Information

Date Listed	April 3rd, 2025
Days on Market	7
Zoning	Zone 91

DATA IS DEEMED RELIABLE BUT IS NOT GUARANTEED ACCURATE BY THE REALTORS® ASSOCIATION OF EDMONTON. COPYRIGHT 2025 BY THE REALTORS® ASSOCIATION OF EDMONTON. ALL RIGHTS RESERVED. Trademarks are owned or controlled by the Canadian Real Estate Association (CREA) and identify real estate professionals who are members of CREA (REALTOR®, REALTORS®) and/or the quality of services they provide (MLS®, Multiple Listing Service®)

Listing information last updated on April 10th, 2025 at 12:32pm MDT