

\$489,900 - 1113 Westerra Way, Stony Plain

MLS® #E4429238

\$489,900

4 Bedroom, 3.50 Bathroom, 1,793 sqft

Single Family on 0.00 Acres

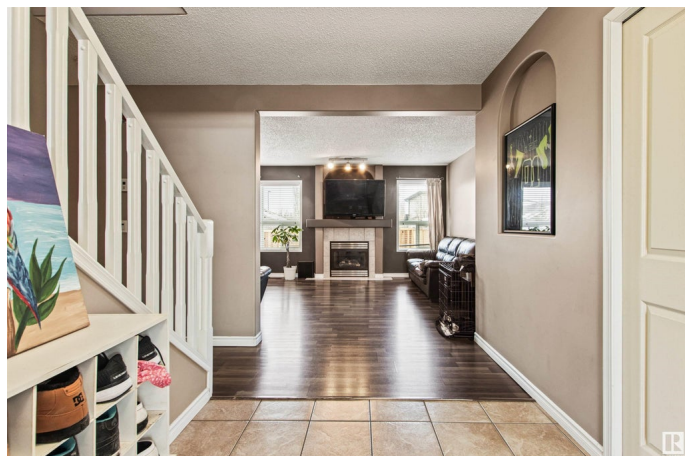
Westerra, Stony Plain, AB

Welcome to Westerra – A Wonderful Family Community! Nestled in the heart of a vibrant, family-friendly neighbourhood, this beautifully maintained 3+1 bedroom home offers the perfect setting to raise a family. Step into a bright and inviting kitchen with Maple cabinets and a charming dining area accented by a stylish mosaic tile design. The cozy living room boasts a gas fireplace, creating a warm and welcoming atmosphere. Upstairs, a spacious bonus room with vaulted ceilings provides the perfect retreat for relaxation. The primary bedroom includes a his/her closets, 4-piece ensuite, two additional bedrooms. Main floor laundry with front-load washer and dryer adds convenience. The fully finished basement offers extra living space with an additional bedroom, bathroom, and a flex room, ideal for a home office, gym, or playroom. Outside, enjoy a fully fenced yard, perfect for kids and pets. Located close to schools, playgrounds, and a golf course.

Built in 2005

Essential Information

MLS® #	E4429238
Price	\$489,900
Bedrooms	4
Bathrooms	3.50



Full Baths	3
Half Baths	1
Square Footage	1,793
Acres	0.00
Year Built	2005
Type	Single Family
Sub-Type	Detached Single Family
Style	2 Storey
Status	Active

Community Information

Address	1113 Westerra Way
Area	Stony Plain
Subdivision	Westerra
City	Stony Plain
County	ALBERTA
Province	AB
Postal Code	T7Z 2Y9

Amenities

Amenities	Air Conditioner, Deck, No Smoking Home
Parking	Double Garage Attached

Interior

Interior Features	ensuite bathroom
Appliances	Air Conditioning-Central, Dishwasher-Built-In, Dryer, Garage Opener, Oven-Microwave, Refrigerator, Stove-Electric, Washer
Heating	Forced Air-1, Natural Gas
Fireplace	Yes
Fireplaces	Mantel
Stories	3
Has Basement	Yes
Basement	Full, Finished

Exterior

Exterior	Wood, Vinyl
Exterior Features	Fenced, Golf Nearby, Landscaped, Playground Nearby, Schools
Roof	Asphalt Shingles
Construction	Wood, Vinyl

Foundation Concrete Perimeter

Additional Information

Date Listed April 4th, 2025

Days on Market 15

Zoning Zone 91

DATA IS DEEMED RELIABLE BUT IS NOT GUARANTEED ACCURATE BY THE REALTORS® ASSOCIATION OF EDMONTON. COPYRIGHT 2025 BY THE REALTORS® ASSOCIATION OF EDMONTON. ALL RIGHTS RESERVED.Trademarks are owned or controlled by the Canadian Real Estate Association (CREA) and identify real estate professionals who are members of CREA (REALTOR®, REALTORS®) and/or the quality of services they provide (MLS®, Multiple Listing Service®)

Listing information last updated on April 19th, 2025 at 7:02pm MDT