

\$275,000 - 12724-26 92 Street, Edmonton

MLS® #E4431193

\$275,000

5 Bedroom, 2.00 Bathroom, 1,076 sqft

Single Family on 0.00 Acres

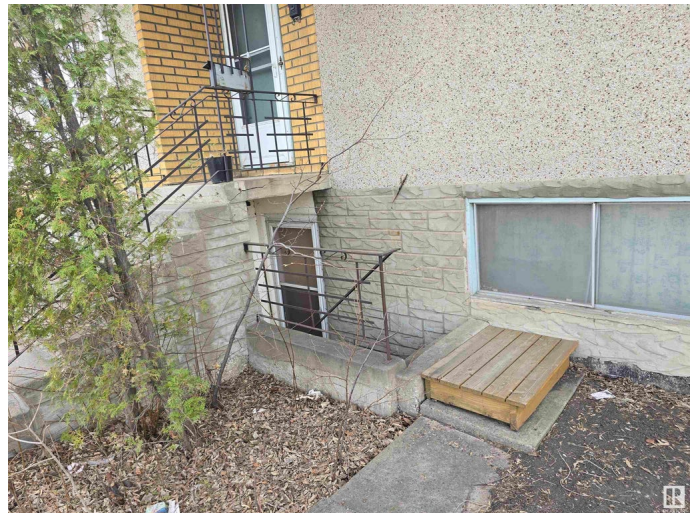
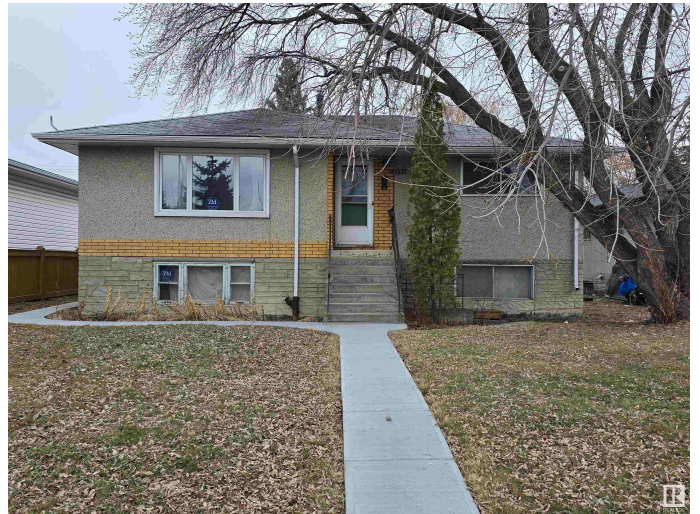
Killarney, Edmonton, AB

Up Down Duplex with separate addresses and separate power meters BUT ONLY 1 GAS METER AND 1 WATER METER. Also features 2 newer Hi efficient Furnaces, Double car 20'x22' garage, newer sidewalks all the way from the front to the back. A newer large concrete pad at the back of the garage as well. The basement has a separate entrance from outside. PLEASE NOTE: Property is being sold as is where is and needs MAJOR repairs or knock down and build new on a 49' x 140' lot zoned RF4.

Built in 1960

Essential Information

MLS® #	E4431193
Price	\$275,000
Bedrooms	5
Bathrooms	2.00
Full Baths	2
Square Footage	1,076
Acres	0.00
Year Built	1960
Type	Single Family
Sub-Type	Duplex Up And Down
Style	Raised Bungalow
Status	Active



Community Information

Address	12724-26 92 Street
Area	Edmonton
Subdivision	Killarney
City	Edmonton
County	ALBERTA
Province	AB
Postal Code	T5E 3R2

Amenities

Amenities	Air Conditioner
Parking Spaces	4
Parking	Double Garage Detached

Interior

Appliances	None
Heating	Forced Air-2, Natural Gas
Stories	2
Has Basement	Yes
Basement	Full, See Remarks

Exterior

Exterior	Wood, Stucco
Exterior Features	Landscaped, Paved Lane, See Remarks
Roof	Asphalt Shingles
Construction	Wood, Stucco
Foundation	Concrete Perimeter

Additional Information

Date Listed	April 15th, 2025
Days on Market	4
Zoning	Zone 02

DATA IS DEEMED RELIABLE BUT IS NOT GUARANTEED ACCURATE BY THE REALTORS® ASSOCIATION OF EDMONTON. COPYRIGHT 2025 BY THE REALTORS® ASSOCIATION OF EDMONTON. ALL RIGHTS RESERVED. Trademarks are owned or controlled by the Canadian Real Estate Association (CREA) and identify real estate professionals who are members of CREA (REALTOR®, REALTORS®) and/or the quality of services they provide (MLS®, Multiple Listing Service®)

Listing information last updated on April 19th, 2025 at 12:32pm MDT