

\$269,999 - 28 4029 Orchards Drive, Edmonton

MLS® #E4431342

\$269,999

2 Bedroom, 1.00 Bathroom, 825 sqft

Condo / Townhouse on 0.00 Acres

The Orchards At Ellerslie, Edmonton, AB

Visit the Listing Brokerage (and/or listing REALTOR®) website to obtain additional information. 2 Bedroom, 1 bathroom upper unit condo with a beautiful balcony facing condo green space. Comes with all energy efficient appliances seen in photos. Extra storage built into the garage. Landscaping & Snow Removal are included in the condo fees! Never mow the lawn or shovel snow again. Electric fireplace, and gas line BBQ hookup.

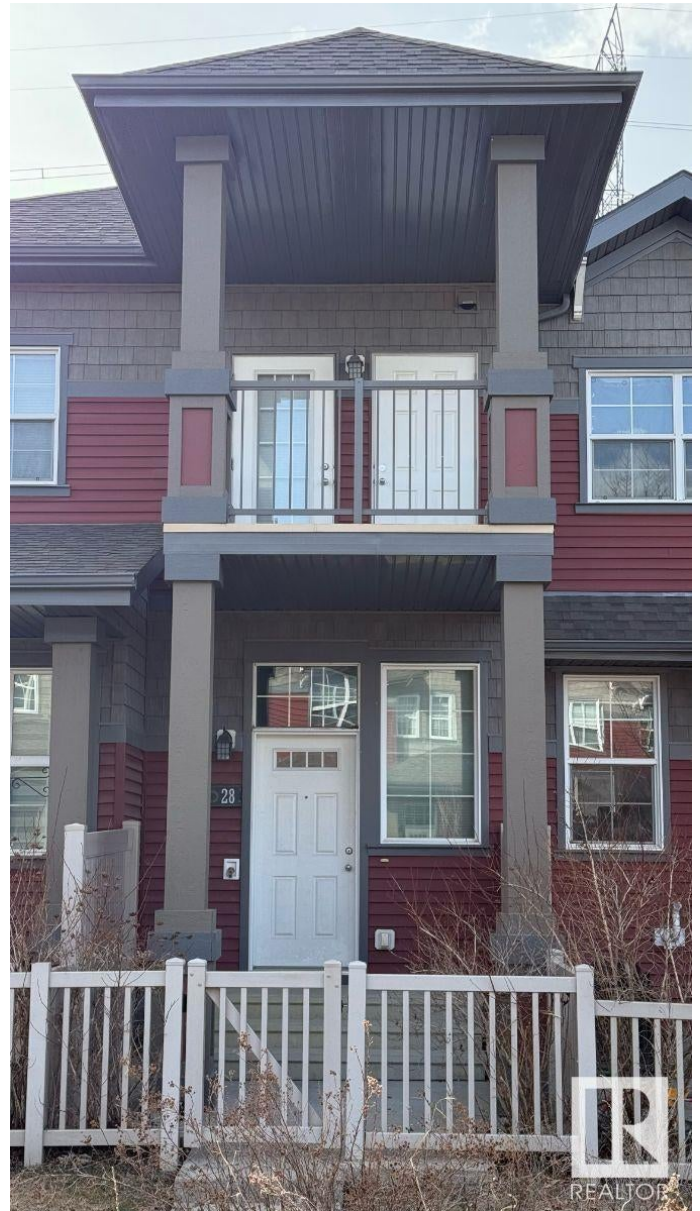
Built in 2014

Essential Information

MLS® #	E4431342
Price	\$269,999
Bedrooms	2
Bathrooms	1.00
Full Baths	1
Square Footage	825
Acres	0.00
Year Built	2014
Type	Condo / Townhouse
Sub-Type	Townhouse
Style	2 Storey
Status	Active

Community Information

Address 28 4029 Orchards Drive



Area	Edmonton
Subdivision	The Orchards At Ellerslie
City	Edmonton
County	ALBERTA
Province	AB
Postal Code	T6X 1V2

Amenities

Amenities	See Remarks
Parking	Single Garage Attached

Interior

Appliances	Refrigerator, Stacked Washer/Dryer, See Remarks
Heating	Forced Air-1, Natural Gas
Stories	1
Has Basement	Yes
Basement	None, No Basement

Exterior

Exterior	Wood, Vinyl
Exterior Features	Public Transportation, Schools
Roof	Asphalt Shingles
Construction	Wood, Vinyl
Foundation	Concrete Perimeter

Additional Information

Date Listed	April 17th, 2025
Days on Market	2
Zoning	Zone 53
HOA Fees	428.57
HOA Fees Freq.	Annually
Condo Fee	\$252

DATA IS DEEMED RELIABLE BUT IS NOT GUARANTEED ACCURATE BY THE REALTORS® ASSOCIATION OF EDMONTON. COPYRIGHT 2025 BY THE REALTORS® ASSOCIATION OF EDMONTON. ALL RIGHTS RESERVED. Trademarks are owned or controlled by the Canadian Real Estate Association (CREA) and identify real estate professionals who are members of CREA (REALTOR®, REALTORS®) and/or the quality of services they provide (MLS®, Multiple Listing Service®)

Listing information last updated on April 19th, 2025 at 2:47pm MDT